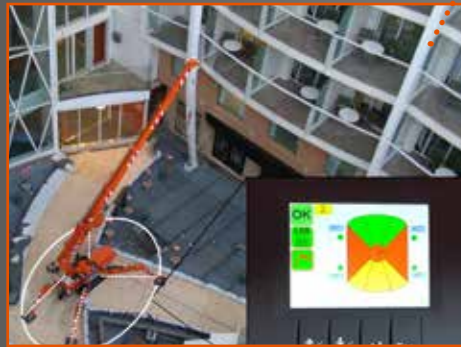


SPX424 Main Features

GEOMETRICAL STABILITY CONTROL

- ✓ Outriggers multi-position and angle
- ✓ Automatic load of working area
- ✓ Different working area:
 - Red - 0%
 - Grey - pick&carry
 - Yellow - 50%
 - Green - 100%



PLUG&PLAY SYSTEM CONTROL

- All accessories and tools:
- ✓ Integrated with the crane
 - ✓ Immediately recognized by the software
 - ✓ With a single radio remote control (same of the crane)



DIFFERENT ATTACHMENTS

- ✓ Three different JIBS
- ✓ Different tools completely integrated and radio remote controlled: glass manipulator, pipe manipulator, hydraulic fork...

SEARCHER HOOK



GLASS MANIPULATOR



MANUAL JIB

HYDRAULIC JIB



SPX424



Jekko srl
Via Campardone, 1 - 31014 Colle Umberto (TV) Italy
info@jekko.it - www.jekko-cranes.com

Product Catalog

SPX424

max 5290 lb

124" $\frac{3}{8}$ x 30" $\frac{1}{2}$ x 77"

max 598"

max 464"

The top of the range mini crane. Technology, innovation and reliability enclosed in the best-seller mini crane ever.



Technical Information

Dimension	L x W x H	124" $\frac{3}{8}$ x 30" $\frac{1}{2}$ x 77"
Stab Area		146" $\frac{3}{8}$ x 146" $\frac{3}{8}$

Crane & Options Weights		lb
	SPX424CDH	4576
	SPX424C+	4576
	/	440
	2.5T-D7	44
	PP400-4DX PP220-4DX PP220-2DX	99
	JIB800GX	55
	JIB800.2H1MX	374
	MR800.4-6+4P	649

SPX424CDH	Petrol Engine	KUBOTA D722-E3B	14.9 kW 20 Hp
SPX424C+	Standard or Lithium Battery	N.4 BATTERIES 6V, 420Ah	4.0 kW 5.5 Hp

Speed		CDH 1.12 mph C+ 0.45 mph
Ext. Tracks		30" $\frac{1}{2}$ - 43" $\frac{1}{4}$

Boom Length
102"-335" 26 sec.

Electric Power Pack

	4 kW - 3F 400 VAC 50 Hz
	EU: 2 kW - 1F 220 VAC 50 Hz USA/CANADA: 4 kW - 1F 110 VAC 60 Hz

Max. Track Load

	7.82 lb/in ²
--	-------------------------

Working Angle

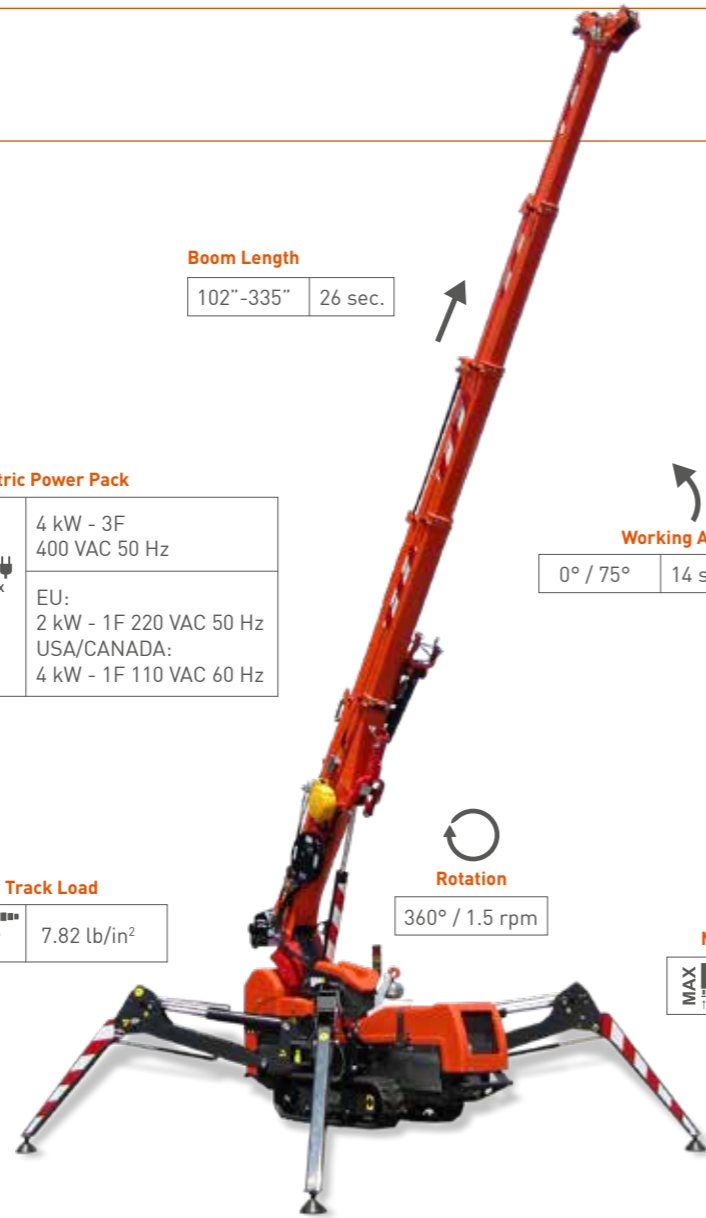
	0° / 75° 14 sec.
--	------------------

Rotation

	360° / 1.5 rpm
--	----------------

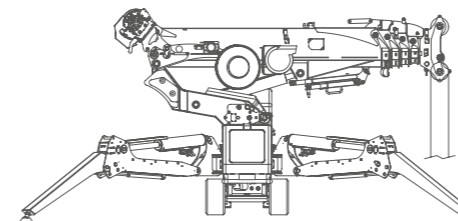
Max. Outrigger Load

	4840 lb
--	---------



Winch & Fall Stages

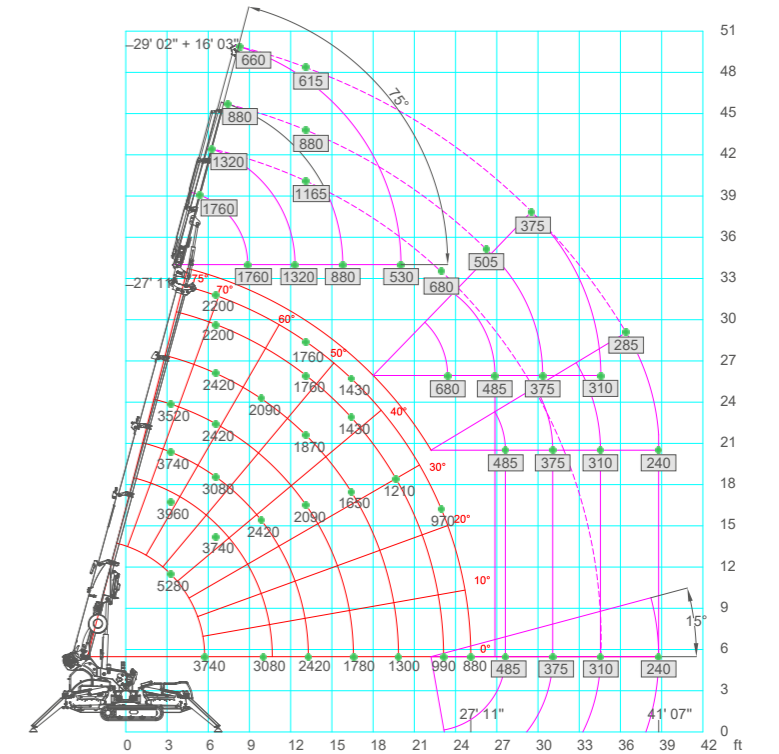
	Main Winch	1760 lb (Single line) 230 ft - Ø $\frac{1}{2}$ in 85.3-104.3 ft/min.
--	------------	--



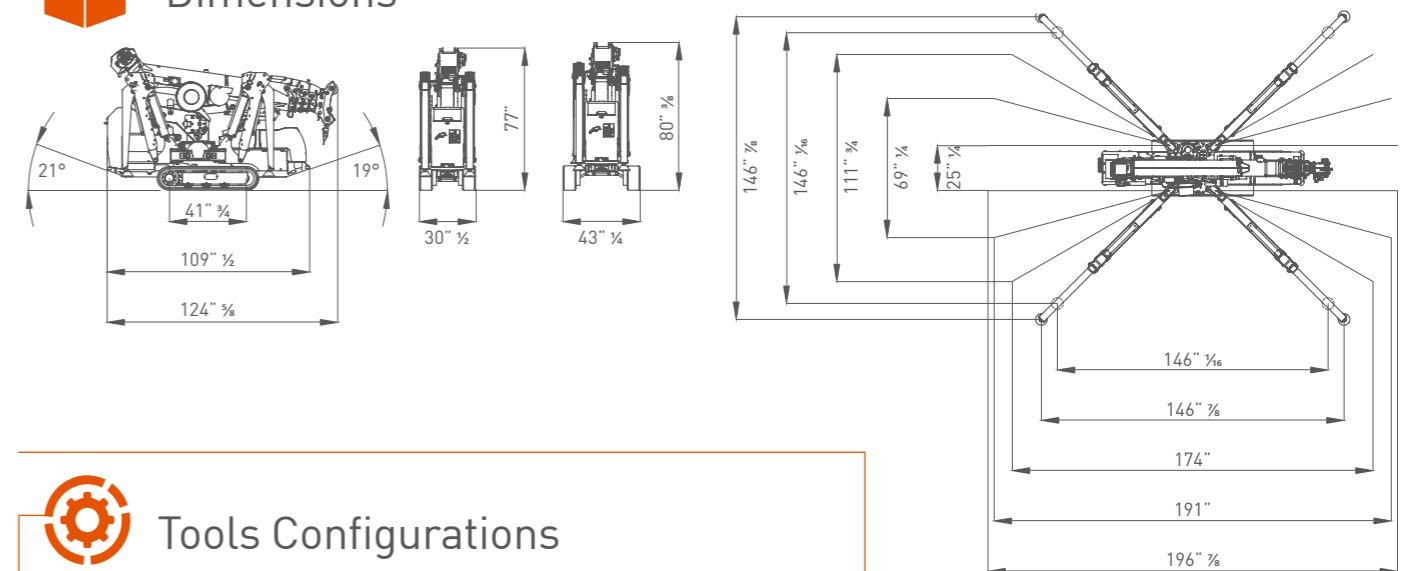
Max. Capacity	Line	Metres
	5290 kg	3 -65 ft
	3525 lb	2 -105 ft
	1760 lb	1 -210 ft

Load Chart

000 Capacity with jib



Dimensions



Crane Options

CRANE OPTIONS

- LAYOUT
- OM400
- 2.5T-D7
- EXT-312-424/29
- WT-424
- J-CONNECT**
 - J-CON
 - J-CON-Y2
 - J-CON-NW
 - 3YW-424-429
 - ZTR.M6H.0200

ATTACHMENTS & TOOLS

- HA-SPX424
- VAI
- OUT-LED-1
- RC-SPX-B
- RC-SPX-C
- WUK-02
- ARTIC-OIL-424/29

ELECTRIC POWER PACK

- PP220-2DX
- PP220-4DX
- PP401-4DX
- PP230-4DX

JIBS

- JIB800GX
- JIB800.2H1MX
- QC-MR800D
- MR800.4-6+4P + Steel Holder
- JIB301GR
- JIB302GR
- RP-JIB301GR

Tools Configurations

	JIB800GX	JIB800.2H1MX	MV600.3E+	MR800.4-6+4P	JIB301/2GR
	1760 lb	1760 lb	1320 lb	1760 lb	660 lb
	1760 lb @ 33°9"	660 lb @ 49°10"	1320 lb @ 35°1"	1430 lb @ 35°1"	660 lb @ 35°1"
	660 lb @ 27°10"	240 lb @ 39°4"	350 lb @ 27°10"	440 lb @ 22°11"	660 lb @ 22°11"

All specifications and features herein described can be changed without prior advice. All indicated data are indicative only and are not binding as crane performs differently depending on its use.